

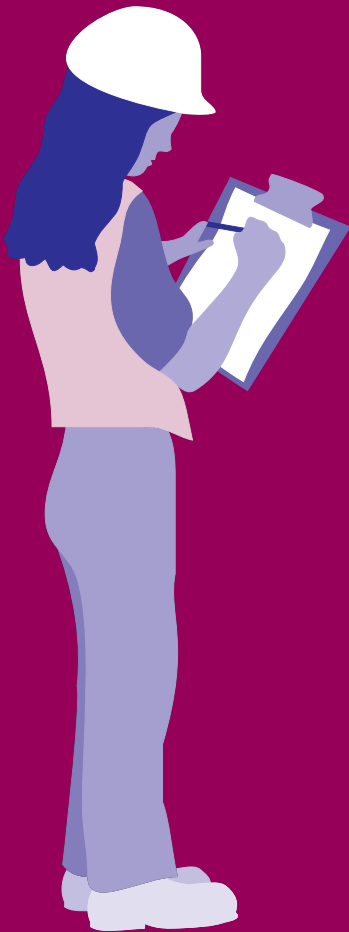
Directory of

Lead Hazard

REDUCTION

s e r v i c e s

in the Bay Area



Produced by
The Alameda County
Lead Poisoning Prevention Program

Third Edition

Directory of

Lead Hazard Reduction Services

in the Bay Area

The Alameda County Lead Poisoning Prevention Program has surveyed state-certified lead professionals for the development of this resource booklet. The booklet is a partial list of state-certified lead-related construction professionals who can assist Bay Area homeowners with identification of lead hazards and lead-safe renovations. The booklet does not recommend any one professional over another. Our intent is to offer the homeowner a resource of names to contact for any lead-related work they may need associated with lead hazard identification, remediation or remodeling.

We encourage you to read the guidelines contained in the beginning of this booklet and to ask informed questions before hiring any contractor. This Directory only lists individuals and companies that are located in the 408, 415, 510, 650, and 925 area codes.

The information in this publication is believed to be accurate at the time of its production. The Alameda County Lead Poisoning Prevention Program assumes no responsibility for any damage that occurs from any action that is based on information found in this publication.






Alameda County Lead Poisoning Prevention Program is a department of the Alameda County Community Development Agency. Our mission is to prevent childhood lead poisoning and other health related environmental problems. Call our Public Information Line at (510) 567-8280 for more information and services for property owners and families.

Third Edition
November 2002

Steven Schwartzberg, MPH, *Program Director*
Adolph Martinelli, *Agency Director*

Table of Contents

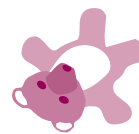
	Page
The problem with lead	1
What do I need to know first?	2
How to hire a lead professional	3
Types of lead hazard reduction professionals	6
 Local environmental labs	6
 Consultants	6
 Contractors	7
How to use this directory	8
List of local environmental labs	9
List of consultants	11
List of contractors	20
Resources	32

The problem with lead...

Lead is the number one environmental health problem facing our children today. This view is shared by the U.S. Environmental Protection Agency (EPA), the Centers for Disease Control (CDC), and the U.S. Department of Health and Human Services (DHHS). The CDC estimates that up to 10 percent of all children may have unacceptably high levels of lead in their blood. New research suggests that a health threat exists even at very low exposures. Yet, while lead poisoning can cause permanent neurological damage and ongoing learning and behavioral problems, it is completely preventable.

The threat to our children from lead exposure is very real. Lead persists today in our soil, in the air and in our homes. Lead exposure crosses all social, economic and geographic lines. The most common source of lead poisoning is dust from deteriorating lead-based paint and unsafe renovations. Most homes built prior to 1978 contain at least some lead-based paint.

The key to preventing lead poisoning is knowledge; knowing what to do and what not to do. For example, deteriorating lead-based paint in a child's home is hazardous. However, removing it improperly can produce extremely high levels of hazardous lead dust. This Directory lists professionals who have been trained in safely identifying and reducing lead hazards and have received lead-certification by the State of California Department of Health Services (DHS).



What do I need to know first?

- ◆ **The first thing you need to know is whether there are lead hazards in your home.** This can be determined by a *risk assessment* which involves taking samples of dust and soil, and testing any paint that is in poor condition. If, however, you are planning a major renovation or are going to disturb intact surfaces of paint, you may also want a *paint inspection*. A paint inspection gives you a reading of each type of paint in every room in the house, regardless of the condition. A risk assessment and/or paint inspection should be done by a lead certified *inspector/assessor*. Home test kits are available but they do not give you as much information and are not as accurate.
- ◆ **Next you need to know what to do if you have lead hazards.** A good risk assessment includes some information on how serious the risks are and what you can do to reduce them. If you need extensive work, you may decide to hire a lead certified *project designer* to write up a detailed work plan for you. Many project designers are also certified as *project monitors*, and can help you make sure the work gets done properly.
- ◆ **Finally, you need someone who can do the work.** Ideally this is a contractor who knows how to work safely on your house and has staff who are lead certified *supervisors* and *workers*. If you decide to do the work yourself, be sure you know how to do it safely! For more information call us at (510) 567-8280.



How to hire a lead professional


Lead hazard remediation is a relatively new specialty and there are a limited but growing number of qualified lead professionals in the industry. There are several steps you can take to improve the chances of hiring someone who has the knowledge and experience to handle your job. The State Department of Health Services certifies construction workers to do lead related construction work and supervision as well as inspectors/risk assessors, project designers and project monitors. Individuals must also take continuing education to maintain their certification. For more information on State Certification, a complete list of certified individuals and to check for current status of individuals' certifications, you can call the State Department of Health Services at (800) 597-5323 or visit their website at www.dhs.ca.gov/childlead.

Credentials

All building contractors who work on your property are required to be licensed by the Contractors State License Board (unless the value of the work is less than \$1000, in most areas; check with your local permit office). Ask to see their pocket license and another form of identification. You can find out if the license is in good standing by logging onto www.cslb.ca.gov and performing a check by the contractor's name, business name, or license number. If you know the license number, you can also call the license board at (800) 321-2752.

If a contractor does lead related work, you should also determine if s/he has the appropriate lead certification. If they are lead certified, they should have a picture ID card from the State of California, Department of Health Services, with the words "Lead-Related Construction Certificate". The holder's name, the type of certification, certification number and expiration date will also be on the card. The certification number starts with the letter indicating the type of certification: for example I-127 is for Inspector/Assessor, D-127, for Project Designer, M-127 for Project Monitor, W-127 for Worker, and S-127 for Supervisor.

Insurance

Ask the contractor if the company is insured against claims covering workers' compensation, property damage, personal liability and lead liability in case of accidents or lead exposures. Ask to see a copy of the certificate of insurance, or ask for the name of the contractor's insurance carrier and agency to verify that the contractor has insurance. In California, if a contractor has employees, workers' compensation insurance coverage is required by law. In this Directory, contractors who report that they carry lead liability insurance are indicated by: 

Experience

Ask about experience relevant to the work you need done. Some contractors may be very experienced in commercial lead abatement work but lack the carpentry and painting experience necessary for doing a quality residential job. Ask for a list of former clients and call them. Find out if their projects were similar to the one you are planning. Ask questions like: “Did the contractor finish the job on schedule? Was the quality of the work acceptable? Was the contractor/supervisor responsive to your questions or concerns?”

Details

Meet with the contractor when s/he comes to look at the job. The way a person examines the site can give you clues as to how they will perform on the job. Notice if they look at everything carefully, take notes, and ask questions. It may be an indication that they will plan well and pay attention to the details when they are doing the project. Ask the contractor what his/her plans are for containment, clean-up, worker protection, and disposal.



Dust control

Dust from uncontained sanding, scraping, water blasting or flame torching of lead-based paint can be very hazardous to residents and workers and can contaminate your property. Uncontained paint removal is also now a violation under Title 17 of the California Code of Regulations. Regardless of whether or not they are certified, ask the contractor how they will minimize and contain the paint chips and dust. Will they put plastic sheeting down? What kinds of tools will they use? Will they use a HEPA vacuum to clean up when they are done? Don't be brushed off by vague assurances of high quality work.

Contracts

Insist on a written contract that spells out in detail what will be done, the work schedule, the price and the terms of payment. Make sure that everything you want done is included and that both parties understand and agree on the scope of work. All payments should be scheduled after that portion of the work is completed, not before.

Speak up

Pay attention to what is going on while the work is in progress. If you see things that look wrong, talk to the contractor about it right away. For example, if you think a painter is using the wrong color, it will be less of an issue if s/he knows about it early on instead of after half the house is painted. On the other hand, if it turns out you don't like the color you chose, you can change it before it gets too expensive to do so. Keep the lines of communication open so little problems don't become big ones.



Types of lead hazard reduction professionals



LOCAL ENVIRONMENTAL TESTING LABS

There may be circumstances where you just want to have one or two paint, soil or water samples analyzed for lead content. There are specific techniques that should be used in collecting samples in order for the results to be valid. Visit our website (www.aclppp.org) or call the lab or our information line at (510) 567-8280 for more information. Once you have collected the sample, there are labs that can perform the analysis for you and tell you how much lead is in your sample. This sampling would be much more limited than a risk assessment or paint inspection performed by a certified professional. There is a list of some local labs on pages 11-12.



CONSULTANTS

Lead-certified inspector/risk assessor

Consultants have *inspectors/risk assessors* who can come to your home and do testing to identify lead hazards and/or lead-based paint.

A *risk assessment* is an onsite investigation for lead-based paint hazards which includes but is not limited to:

1. a visual inspection
2. limited environmental sampling of dust, soil, and deteriorated paint
3. a report of the results that includes recommendations for controlling any lead-based paint hazards.

A *paint inspection* is a surface by surface investigation to determine the presence of lead-based paint regardless of the condition of the paint. This is useful information if you plan to disturb intact painted surfaces during remodeling projects. A paint inspection does not necessary identify the presence of lead hazards.

Depending on your situation, you may need a combination paint inspection and risk assessment. Be clear about the difference before contracting for any lead inspection services.

Clearance testing is an onsite limited investigation assuring all lead reduction activities are complete. The clearance process includes a visual assessment and collection and analysis of environmental dust samples.



CONSULTANTS *(cont'd)*

Lead-certified project designer and project monitor

A *project designer* develops a work plan to implement lead hazard control measures. A *project monitor* oversees the construction project to insure compliance with all specifications and deals with contract issues.



CONTRACTORS

The contractor performs construction work. They may be licensed as a general building contractor or a specialty contractor. General building contractors usually oversee projects and coordinate the subcontractors for a job. Specialty contractors are licensed to perform one type of work, like painting or plumbing, and often are hired as subcontractors by a general contractor.

The services each contractor performs is listed in this Directory. For example, the service listed as “environmental (asbestos/lead)” indicates that the company specializes in the identification and/or remediation of environmental hazards such as asbestos and lead. Other contractors perform services such as remodeling, painting, home maintenance and repair, window replacement, plastering, landscaping, soil removal, waste hauling, or other services. All contractors listed in this Directory have staff who are lead certified by the State of California. Contractors should maintain lead certification as *workers* and/or *supervisors*.

Lead clean-up

Lead-certified contractors should be expected to minimize, contain, and clean-up all paint chips and dust. If work has been done in an unsafe manner in your home, ask the contractor to do a thorough clean-up. You can call our public information line at (510) 567-8280 for more information. You may also hire a lead-certified contractor to do clean-up of interior dust, exterior dust and/or paint chips. Contractors listed in this Directory who provide one or more of the specialized lead cleaning services are indicated by this symbol:



How to use this directory

The Directory contains business names arranged alphabetically. Three sections are provided to assist you in locating appropriate resources:



Local environmental labs



Consultants



Contractors

Labs, consultants, and contractors provide services in the following area codes:

San Francisco, Marin, Peninsula Areas

Area Codes: (415) (650)

East Bay: Contra Costa, Alameda Counties

Area Codes: (510) (925)

South Bay: San Jose, Santa Clara

Area Code: (408)

Guide to symbols:



Lead liability insurance: indicates that the company reported that they carry lead liability insurance



Lead clean-up: indicates that the company offers interior lead dust and/or exterior dust and paint chips clean-up



Languages: indicates other languages that the company provides, in addition to English

LOCAL ENVIRONMENTAL LABS

Asbestos TEM Laboratories, Inc.



1409 Fifth St., Suite C
Berkeley, CA 94710

Years in business: 13

Service areas: 408, 415, 510, 650, 925

Services: environmental (asbestos/lead),
lab analysis

Languages: Spanish, Chinese, Tagalog

Contact: Mark Bailey, President

Phone: (510) 528-0108

Fax: (510) 528-0109

E-mail: MbaileyASB@aol.com

Website: www.asbestosTEMLabs.com

Calcoast Labs, Inc.



4072 Watts St.
Emeryville, CA 94608

Years in business: 20

Service areas: 408, 415, 510, 650, 925

Services: environmental (asbestos/lead), lab analysis

Languages: Cantonese, Mandarin

Contact: D. Patrick Fairley, Lab Director

Phone: (510) 652-2979

Fax: (510) 652-3085

E-mail: www.ccoastlabs@aol.com

Website: www.calcoastlabs.com

Forensic Analytical



3777 Depot Rd., #409
Hayward, CA 94545

Years in business: 16

Service areas: 408, 415, 510, 650, 925

Services: environmental (asbestos/lead),
risk assessment/paint inspection,
lab analysis, mold assessment

Languages: Spanish

Contact: John Watson,

Dir. Sales & Marketing

Phone: (510) 887-8828

Fax: (510) 887-4218

E-mail: info@forensica.com

Website: www.forensica.com

Kellco Services, Inc.



3137 Diablo Ave.
Hayward, CA 94545

Years in business: 15

Service areas: 408, 415, 510, 650, 925

Services: environmental (asbestos/lead),
risk assessment/paint inspection,
lab analysis, mold, indoor air quality

Contact: Tim Cannard, VP, Sr. Project Mngr.

Phone: (510) 786-9751

Fax: (510) 786-9625

E-mail: mailbox@kello.com

Website: www.kellco.com



Macs Lab, Inc.

2070A Walsh Ave.
Santa Clara, CA 95050

Years in business: 14

Service areas: 408, 415, 510, 650, 925

Services: environmental (asbestos/lead),
risk assessment/paint inspection,
lab analysis

Languages: Hindi

Contact: Maheen B. Doctor,
Director of Field Services

Phone: (408) 727-9727

Fax: (408) 654-3951

E-mail: mdoctor@macslab.com

Website: www.macslab.com

Micro Analytical Laboratories, Inc.

5900 Hollis St., Suite M
Emeryville, CA 94608

Years in business: 13

Service areas: 408, 415, 510, 650, 925

Services: lab analysis

Contact: John Ayou, Business Mngr.

Phone: (510) 653-0824

Fax: (510) 653-1361

E-mail: johnayou@yahoo.com

Website: www.labmicro.com

Protech Consulting & Engineering

1755 E. Bayshore Rd., #14B
Redwood City, CA 94063

Service areas: 408, 415, 510, 650, 925

Services: environmental (asbestos/lead),
risk assessment/paint inspection,
lab analysis, mold testing/inspection,
environmental site assessments (phase I & II)

Languages: Spanish

Contact: Ron Mason, Director

Phone: (800) 559-8324

Fax: (650) 569-4023

RJ Lee Group, Inc.

530 McCormick St.
San Leandro, CA 94577

Years in business: 22

Service areas: 408, 415, 510, 625, 925

Services: lab analysis

Contact: Dr. Ben Schiefelbein,
Sr. Technical Sales Consultant

Phone: (510) 567-0480

E-mail: bschiefelbein@rjlg.com

Website: www.rjlg.com



CONSULTANTS

AEI Consultants



3210 Old Tunnel Rd., Suite B
Lafayette, CA 94549

Years in business: 11

Service areas: 408, 415, 510, 650, 925

Services: environmental (asbestos/lead),
risk assessment, environmental engineering
and remediation

Contact: Nick Walchuk, Operations Mngr .

Phone: (925) 283-6000

Fax: (925) 283-6121

E-mail: walchuk@aeiconsultants.com

Website: www.aeiconsultants.com

Bechtel National



50 Beale St.; 50/11/B75
San Francisco, CA 94105

Years in business: 103

Service areas: 408, 415, 510, 650, 925

Services: environmental (asbestos/lead),
risk assessment, engineering,
project management

Languages: Spanish, Cantonese, Mandarin

Contact: Norm Black, ESH

Special Project Manager

Phone: (415) 768-3590

Fax: (415) 768-1794

E-mail: nblack@bechtel.com

Website: www.bechtel.com

Benchmark



3732 Charter Park Dr., Suite A
San Jose, CA 95136

Years in business: 9

Service areas: 408, 415, 510, 650, 925

Services: environmental (asbestos/lead),
risk assessment/paint inspection

Languages: Spanish

Contact: Wendy Buller,

Chief Marketing Officer

Phone: (408) 448-7594

(800) 988-7424 toll free

Fax: (408) 448-3849

E-mail: wlb@benchmark-inspections.com

Website: www.benchmark-inspections.com

C & C Environmental Group



440 Ringwood Ave.
Menlo Park, CA 94025

Service areas: 415, 650

Services: environmental (asbestos/lead),
risk assessment/paint inspection, surveys

Languages: Greek

Contact: Chris Zouboulakis,

Project Manager, Principal

Phone: (650) 322-6062

Fax: (707) 982-1881

E-mail: czebra@yahoo.com

Cal Inc.



2040 Peabody Rd.
Vacaville, CA 95687

Years in business: 20+

Service areas: 408, 415, 510, 650, 925

Services: environmental (asbestos/lead),
remodeling, painting,
window replacement, soil removal,
risk assessment/paint inspection,
waste hauling

Performs lead clean-up work: interior dust,
exterior dust and paint chips

Languages: Spanish

Contact: David Esparza, Owner

Phone: (707) 446-7996

Fax: (707) 446-4906

E-mail: desparza@cal-inc.com

Website: www.cal-inc.com

Cal-Lead



326 Alta Ave.
Santa Cruz, CA 95060

Years in business: 7

Service areas: 408, 415, 510, 650, 831, 925

Services: environmental (asbestos/lead), remodeling,
window replacement,
risk assessment/paint inspection

Performs lead clean-up work: interior dust

Languages: Spanish

Contact: Noel Benson, Owner

Phone: (831) 469-4707

E-mail: Debnoel@cruzio.com

Website: www.cal-lead.com

Carlos Azcona



7881 Lovers Ln.
Hollister, CA 95023

Years in business: 1

Service areas: 408, 831

Services: risk assessment/paint inspection

Languages: Spanish

Contact: Carlos Azcona, Owner

Phone: (831) 635-9468

E-mail: c.walnut@netzero.com

Construction Management Systems

1117 So. B St., Suite #8
San Mateo, CA 94401

Years in business: 17

Service areas: 415, 650 (not in Marin)

Services: construction management

Contact: Lou Janakos, Owner

Phone: (650) 342-5888

Fax: (650) 342-1195

E-mail: cmsjanakos@aol.com

Entox & Assoc.

132 Del Casa Dr.
Mill Valley, CA 94941

Years in business: 6

Service areas: 415, 510, 650, 925

Services: environmental (asbestos/lead),
risk assessment/paint inspection

Contact: Rudy Von Burg, Principal

Phone: (415) 383-0271

Fax: (415) 383-0271

E-mail: rvonburg@aol.com

Website: www.entoxassoc.com

Environmental Innovations Corporation



8301 Edgewater Dr. #210
Oakland, CA 94621

Years in business: 17

Service areas: 408, 415, 510, 650, 925, 209, 916

Services: environmental (asbestos/lead),
risk assessment/paint inspection,
mold inspection, evaluation & management,
restoration and construction management,
phase I and II site assessment, sampling
and evaluation

Languages: Spanish, Persian/Farsi, German

Contact: Farshid Salamati,
Technical Director

Phone: (510) 632-0104

(888) 932-0104 toll free

Fax: (510) 728-0590

E-mail: eic@4safetyusa.com

Environmental Technical Services, Inc.



124 Washington Ave. #A
Richmond, CA 94801

Service areas: 408, 415, 510, 650, 925

Services: environmental (asbestos/lead),
risk assessment/paint inspection

Contact: Kody Khodayari, Principal

Phone: (510) 234-1221

Fax: (510) 234-0404

E-mail: ETSofCA@aol.com

EnviroScience, Inc.



2220 S. Bascom Ave.
Campbell, CA 95008

Years in business: 10

Service areas: 408, 415, 510, 650, 925

Services: environmental (asbestos/lead),
risk assessment/paint inspection

Contact: Hooman Sotoodeh, PhD, PE,
Principal

Phone: (408) 371-4181

Website: www.enviroscience-inc.com

Forensic Analytical



3777 Depot Rd., #409
Hayward, CA 94545

Years in business: 16

Service areas: 408, 415, 510, 650, 925

Services: environmental (asbestos/lead),
risk assessment/paint inspection,
lab analysis, mold assessment

Languages: Spanish

Contact: John Watson,
Dir. of Sales & Marketing

Phone: (510) 887-8828

Fax: (510) 887-4218

E-mail: info@forensica.com

Website: www.forensica.com

Hazard Management Services, Inc. (HMS, Inc.)



367 Civic Dr., Suite 7
Pleasant Hill, CA 94523

Years in business: 19+

Service areas: 408, 415, 510, 650, 925

Services: environmental (asbestos/lead),
risk assessment/paint inspection, mold,
toxics, safety

Contact: Tom Wangerin,
Regional Manager

Phone: (925) 363-3442

Fax: (925) 363-7897

E-mail: Twangerin@softcom.net

Hazardous Materials Assessment, Inc.

1933 Davis St., Suite 303
San Leandro, CA 94577

Years in business: 17

Service areas: 408, 415, 510, 650, 925

Services: environmental (asbestos/lead)

Contact: Scott W. Compton, President

Phone: (510) 638-4801

E-mail: compton@asbestos.org

Website: www.asbestos.org

Hygienetics Environmental



2433 Mariner Square Loop, Suite 210
Alameda, CA 94501

Years in business: 21

Service areas: 415, 510, 650, 925

Services: environmental (asbestos/lead),
risk assessment, paint inspection

Contact: Kris McCormick, Regional Director

Phone: (510) 749-1003

Fax: (510) 749-1069

E-mail: kris.mccormick@hygienetics.com

Website: www.hygienetics.com

IHI Environmental

1260 45th St., Suite L
Emeryville, CA 94608

Years in business: 22

Service areas: 408, 415, 510, 650, 925

Services: environmental (asbestos/lead),
risk assessment/paint inspection

Contact: David B. McGrath, Program Mngr.
Asbestos/Lead Paint Services

Phone: (510) 923-1661

Fax: (510) 923-1468

E-mail: mcgrath@ihi-env.com

Website: www.ihl-env.com

Jason Garrison

1321 San Bruno Ave.
San Francisco, CA 94110

Years in business: 10

Service areas: 408, 415, 510, 650, 925

Services: environmental (asbestos/lead),
risk assessment/paint inspection

Contact: Jason Garrison,
Environmental Project Manager

Phone: (415) 285-2058

E-mail: bluetuliptheband@yahoo.com

Kellco Services, Inc.



3137 Diablo Ave.
Hayward, CA 94545

Years in business: 15

Service areas: 408, 415, 510, 650, 925

Services: environmental (asbestos/lead),
risk assessment/paint inspection,
lab analysis, mold, indoor air quality

Contact: Tim Cannard, VP, Sr. Project Mngr.

Phone: (510) 786-9751

Fax: (510) 786-9625

E-mail: mailbox@kelco.com

Website: www.kellco.com

Ken Robinson Consulting

7799 Lilac Way
Cupertino, CA 95014

Years in business: 10
Service areas: 408, 650
Services: environmental (lead),
risk assessment/paint inspection,
clearance inspection

Contact: Kenneth W. Robinson,
MPH, REHS
Phone: (408) 255-4498
Cell: (650) 255-1764
E-mail: kwrobinson1@excite.com

Lead Education & Detection

3380 20th St. #102
San Francisco, CA 94110

Years in business: 2
Service areas: 408, 415, 510, 650, 925
Services: environmental (asbestos/lead)
risk assessment/paint inspection, lab analysis

Contact: Diana Elrod, Owner
Phone: (415) 648-1600
Fax: (415) 550-7448
E-mail: Info@L-E-A-D.net

LFR Levine Fricke



1900 Powell St., Suite 1200
Emeryville, CA 94608

Years in business: 20
Service areas: 408, 415, 510, 650, 925
Services: environmental (asbestos/lead),
soil removal,
risk assessment/paint inspection

Contact: Michael Doherty,
Lead Technician
Phone: (510) 652-4500
Fax: (510) 652-4906
E-mail: mike.doherty@LFR.com
Website: www.lfr.com

Macs Lab, Inc.



2070A Walsh Ave.
Santa Clara, CA 95050

Years in business: 14
Service areas: 408, 415, 510, 650, 925
Services: environmental (asbestos/lead),
risk assessment/paint inspection,
lab analysis

Languages: Hindi

Contact: Maheen B. Doctor,
Director of Field Services
Phone: (408) 727-9727
Fax: (408) 654-3951
E-mail: mdoctor@macslab.com
Website: www.macslab.com

NorBay Consulting



2563 Heatherstone Dr.
San Rafael, CA 94903

Years in business: 3

Service areas: 415, 510, 650, 925

Services: environmental (asbestos/lead),
risk assessment/paint inspection

Contact: Bob Gerhold
Phone: (415) 507-9786
Fax: (415) 507-9760
E-mail: rohold@attbi.com

Occupational Knowledge



1255 Post St. #927
San Francisco, CA 94109

Years in business: 15

Service areas: 408, 415, 510, 650, 925

Services: environmental (asbestos/lead),
risk assessment/paint inspection,
lead/asbestos training

Contact: Perry Gottesfeld
Phone: (415) 441-5199
Fax: (415) 441-5767

Peanuts for Painting! A California Corporation



6144 Valley View Rd.
Oakland, CA 94611

Years in business: 21

Service areas: 408, 415, 510, 650, 925

Services: environmental (asbestos/lead),
remodeling, painting,
home maintenance & repair, waterproofing

Performs lead clean-up work: interior dust,
exterior dust and paint chips

Languages: Spanish, Arabic

Contact: Fred J. Schmidt, President
Phone: (415) 346-7107
Fax: (510) 338-0092
E-mail: fstpnut@aol.com

Pinnacle Environmental



P.O. Box 194104
San Francisco, CA 94119

Years in business: 6

Service areas: 408, 415, 510, 650, 925

Services: environmental (asbestos/lead),
risk assessment/paint inspection

Contact: Stuart Smith, Principal
Phone: (415) 831-8416
Fax: (415) 831-8461
E-mail:
stusmith@pinnacle-environmental.com
Website:
www.pinnacle-environmental.com

Protech Consulting & Engineering



1755 E. Bayshore Rd., #14B
Redwood City, CA 94063

Contact: Ron Mason, Director
Phone: (800) 559-8324
Fax: (650) 569-4023

Years in business: 15

Service areas: 408, 415, 510, 650, 925

Services: environmental (asbestos/lead),
risk assessment/paint inspection,
lab analysis, mold testing/inspection,
environmental site assessments (phase I and II)

Languages: Spanish

RGA Environmental

4701 Doyle St. #14
Emeryville, CA 94608

Contact: Harry Lawrence,
Dir. of Business Dev.
Phone: (510) 547-7771
Fax: (510) 547-1983
E-mail: harry@rgaenv.com
Website: www.rgaenv.com

Years in business: 16

Service areas: 408, 415, 510, 650, 925

Services: risk assessment/paint inspection

Sensible Environmental Solutions, Inc.

1704 Alhambra Ave.
Martinez, CA 94553

Contact: Mitch Edwards,
Sr. Indust. Hygienist
Phone: (925) 370-9737
Fax: (925) 370-1453
E-mail: ses2@earthlink.net
Website: www.sensibleinc.net

Years in business: 7

Service areas: 408, 415, 510, 650, 925

Services: environmental (asbestos/lead),
risk assessment/paint inspection

Sequoia Environmental



900 Murmansk St., Suite 1B
Oakland, CA 94607

Contact: Chris Wabuzoh, Principal
Phone: (510) 663-2912
Fax: (510) 663-2914
E-mail: sequoiaenv@aol.com

Years in business: 9

Service areas: 408, 415, 510, 650, 925

Services: environmental (asbestos/lead),
risk assessment/paint inspection

Stan Reynolds Consulting



543 Andover St.
San Francisco, CA 94110

Years in business: 5

Service areas: 408, 415, 510, 650, 925

Services: risk assessment/paint inspection

Contact: Stan Reynolds

Phone: (415) 412- 2066

Fax: (415) 648-7193

E-mail: Stan543And@aol.com

Sterling & Associates, Inc.



168 South Hillview Dr.
Milpitas, CA 95035

Years in business: 13

Service areas: 408, 415, 510, 650,
707, 925

Services: environmental (asbestos/lead),
risk assessment/paint inspection,
industrial hygiene, indoor air quality,
mold/fungi consulting

Languages: Spanish, Mandarin, Vietnamese

Contact: Richard Krentz, CIH, President

Phone: (408) 262-1656

Fax: (408) 262-5902

E-mail: krentz@rsterling.com

Website: www.rsterling.com

Twegbe, Inc.



197 Highland Ave.
San Francisco, CA 94110

Years in business: 5

Service areas: 408, 415, 510, 650, 925

Services: environmental (asbestos/lead),
risk assessment/paint inspection,
consultant, lead wipe clearance

Contact: Sorbor Twegbe, Project Manager

Phone: (415) 285-3522

Fax: (415) 285-2960

E-mail: stwegbe@aol.com

Vantage Point Environmental



3020 Rose St.
Martinez, CA 94553

Years in business: 10+

Service areas: 408, 415, 510, 650, 925

Services: environmental (asbestos/lead),
risk assessment/paint inspection,
consulting and project design

Contact: Burt Olhiser, CPE, CAC, Principal

Phone: (925) 229-2990

Fax: (925) 229-4389

Cell: (925) 383-1699

E-mail: bolhiser@aol.com

CONTRACTORS

3K's Hauling & Waste Removal

1479 12th St.
Oakland, CA 94607

Years in business: 1
Service areas: 415, 510, 650, 925
Services: home maintenance & repair, waste hauling

Contact: Kelvin Butler Sr., Owner
Phone: (510) 834-9700
Fax: (510) 839-6427
E-mail: singlefatheroftwo@sbcglobal.net

Alexander A. Construction



23220 Sally Court
Hayward, CA 94541

Years in business: 20
Service areas: 415, 510, 650, 925
Services: environmental (asbestos/lead), remodeling, painting, home maintenance & repair, window replacement, waste hauling
Performs lead clean-up work: interior dust, exterior dust and paint chips

Contact: Author Alexander, Owner
Phone: (510) 889-8128
Fax: (510) 889-8128

Atlas Bay City Company, Inc.



1797 Yosemite Ave.
San Francisco, CA 94124

Service areas: 408, 415, 510, 650, 925
Services: environmental (asbestos/lead), painting, risk assessment/paint inspection
Performs lead clean-up work: interior dust, exterior dust and paint chips
Languages: Spanish, Cantonese, Mandarin

Contact: Keith C. Hawkins, President
Phone: (415) 822-6520
Fax: (415) 822-6521
E-mail: AtlasBig9@aol.com
Website: www.atlasbaycity.com

Bay Area Painting



4061 East Castro Valley Blvd. #154
Castro Valley, CA 94552

Years in business: 30
Service areas: 408, 415, 510, 650, 925
Services: environmental (asbestos/lead), painting
Performs lead clean-up work: interior dust, exterior dust and paint chips
Languages: Spanish

Contact: Philip Bass, Owner
Phone: (510) 337-9841
(800) 914-5554 toll free
Fax: (510) 337-9849
E-mail: phil@bayareapainting.com
Website: www.bayareapainting.com

Bay View Environmental Services



1366 Doolittle Dr.
San Leandro, CA 94577

Years in business: 9

Service areas: 408, 415, 510, 625, 925

Services: environmental (asbestos/lead),
demolition, scaffolding, waste hauling

Performs lead clean-up work: interior dust,
exterior dust and paint chips

Languages: Spanish

Contact: Richard Cleveland

Phone: (510) 562-6181

Fax: (510) 562-6182

E-mail:

rcleveland@bayview-environmental.com

Website:

www.bayview-environmental.com

Bluewater Services, Inc.



2075 Williams St.
San Leandro, CA 94577

Years in business: 12

Service areas: 408, 415, 510, 650, 925

Services: environmental (asbestos/lead),
soil removal, waste hauling, mold,
interior demolition

Performs lead clean-up work: interior dust,
exterior dust and paint chips

Languages: Spanish

Contact: Chris Kirschenheuter, President

Phone: (510) 346-8800

(800) 536-6702 toll free

Fax: (510) 346-8923

E-mail: chris@bwserv.com

Website: www.bwserv.com

Cal Inc.



2040 Peabody Rd.
Vacaville, CA 95687

Years in business: 20+

Service areas: 408, 415, 510, 650, 925

Services: environmental (asbestos/lead),
remodeling, painting,
window replacement, soil removal,
risk assessment/paint inspection
waste hauling

Performs lead clean-up work: interior dust,
exterior dust and paint chips

Languages: Spanish

Contact: David Esparza, Owner

Phone: (707) 446-7996

Fax: (707) 446-4906

E-mail: desparza@cal-inc.com

Website: www.cal-inc.com



Cal-Lead



326 Alta Ave.
Santa Cruz, CA 95060

Years in business: 7

Service areas: 408, 415, 510, 650, 831, 925

Services: environmental (asbestos/lead),
remodeling, window replacement,
risk assessment/paint inspection

Performs lead clean-up work: interior dust

Languages: Spanish

Contact: Noel Benson, Owner

Phone: (831) 469-4707

E-mail: debnoel@cruzio.com

Website: www.cal-lead.com

Citywide Painting



2601 Adeline St. #180
Oakland, CA 94607

Years in business: 12

Service areas: 415, 510, 650, 925

Services: painting

Performs lead clean-up work: interior dust,
exterior dust and paint chips

Languages: Korean

Contact: Jae Kim, Owner

Phone: (510) 444-0645

Fax: (510) 444-0648

E-mail: Jaekim7676@aol.com

Construction Management Systems

1117 So. B St., Suite #8
San Mateo, CA 94401

Years in business: 17

Service areas: 415, 650 (not in Marin)

Services: construction management

Contact: Lou Janakos, Owner

Phone: (650) 342-5888

Fax: (650) 342-1195

E-mail: cmsjanakos@aol.com

CST Environmental



15007 Wicks Blvd.
San Leandro, CA 94577

Years in business: 12

Service areas: 408, 415, 510, 650, 925

Services: environmental (asbestos/lead),
soil removal, demolition

Performs lead clean-up work: interior dust,
exterior dust and paint chips

Languages: Spanish

Contact: Trent Michels, Vice President

Phone: (510) 357-8971

Fax: (510) 357-9806

E-mail: tmichels@cstenv.com

Website: www.cstenv.com

Doherty Painting & Construction, Inc.



880 Innes Ave.
San Francisco, CA 94124

Years in business: 17

Service areas: 408, 415, 510, 650, 925

Services: environmental (asbestos/lead), remodeling,
painting, home maintenance & repair,
window replacement, plastering,
waste hauling

Performs lead clean-up work: interior dust,
exterior dust and paint chips

Languages: Spanish

Contact: Lisa Becker, Office Manager

Phone: (415) 695-1494

Fax: (415) 695-1499

E-mail: dohertyest@aol.com

Website: www.dohertypaint-const.com

East Bay Unlimited Services



6201 Hillmont Dr.
Oakland, CA 94605

Years in business: 10

Service areas: 510, 925

Services: painting, minor interior and exterior repair

Performs lead clean-up work: interior dust,
exterior dust and paint chips

Contact: Mark Germann

Phone: (510) 568-6763

Fax: (510) 562-5445

Eddie's Painting



3145 Geary Blvd. #452
San Francisco, CA 94118

Service areas: 415, 510, 707 (Sonoma)

Services: environmental (asbestos/lead),
remodeling, painting,
home maintenance & repair

Performs lead clean-up work: interior dust,
exterior dust and paint chips

Contact: Edward Krukowski

Phone: (415) 406-6141

(415) 407-4757

Fax: (707) 781-3862

E-mail: info@eddiespainting.com

Website: www.eddiespainting.com



Environmental Asbestos-Lead-Mold

8400 Enterprise Way, Rm. #119
Oakland, CA 94621



Contact: Jerry Rodarte, Business Mngr.
Secretary, Treasurer

Phone: (510) 569-4761

Fax: (510) 569-4763

Years in business: 18

Service areas: 408, 415, 510, 650, 925

Services: environmental (asbestos/lead)

Performs lead clean-up work: interior dust,
exterior dust and paint chips

Languages: Spanish

Environmental Innovations Corp.



8301 Edgewater Dr. #210
Oakland, CA 94621

Contact: Farshid Salamati,
Technical Director

Phone: (510) 632-0104

(888) 932-0104 toll free

Fax: (510) 728-0590

E-mail: Eic@4safetyUSA.com

Years in business: 17

Service areas: 408, 415, 510, 650, 925, 209, 916

Services: environmental (asbestos/lead),
risk assessment/paint inspection,
mold inspection,
evaluation and management,
restoration and construction management,
phase I and II site assessment and
sampling and evaluation

Languages: Spanish, German, Persian/Farsi

Flying Colors



1209 Arguello Blvd.
San Francisco, CA 94122

Contact: Steven Mongan, Owner

Phone: (415) 564-4500

Fax: (415) 564-4500

E-mail: lead@flyingcolors.com

Years in business: 20

Service areas: 415, 510, 650

Services: painting, home restoration and repair,
window replacement

Performs lead clean-up work: interior dust,
exterior dust and paint chips

Languages: Spanish

Greg Daigian Painting & Construction



2600 Cabrillo St.
San Francisco, CA 94121

Contact: Greg Daigian, Owner
Phone: (415) 386-1121

Years in business: 25

Service areas: 415, 510, 650, 925

Services: remodeling, painting, window replacement, plastering

Performs lead clean-up work: interior dust,
exterior dust and paint chips

Honest Olee Wades Painting & Decorating & Lead Abatement



2800 Delaware St.
Oakland, CA 94602

Contact: Mr. Olee Wade,
Sole Proprietor

Phone: (510) 482-4342

Fax: (510) 482-4342

Years in business: 13

Service areas: 408, 415, 510, 650, 925

Services: environmental (asbestos/lead),
painting, mold remediation

Performs lead clean-up work: interior dust,
exterior dust and paint chips

J & R Painting



111 Middlefield Dr.
San Francisco, CA 94132

Contact: Michael J. Ruggiero

Phone: (415) 661-8392

Fax: (650) 757-5815

Years in business: 22

Service areas: 408, 415, 510, 650, 925

Services: environmental (asbestos/lead), remodeling, painting,
home maintenance & repair, waterproofing

Performs lead clean-up work: interior dust,
exterior dust and paint chips

J's Construction



4941 Antioch Loop
Union City, CA 94587

Contact: Julius Kuruc, Owner

Phone: (510) 441-9035

Fax: (510) 441-9035

E-mail: jsconstr@aol.com

Website: www.jsconstructionbuild.com

Years in business: 2

Service areas: 510, 925

Services: environmental (asbestos/lead),
painting, home maintenance & repair,
window replacement

Languages: Slovak, Hungarian



Janus Corporation



1081 Shary Cir.
Concord, CA 94518

Years in business: 13

Service areas: 408, 415, 510, 650, 925

Services: environmental (asbestos/lead),
soil removal, waste hauling,
mold remediation, interior demolition

Performs lead clean-up work: interior dust,
exterior dust and paint chips

Contact: Paul Chelstowski, President

Phone: (925) 969-9200

Fax: (925) 969-9290

E-mail: paulc@januscorp.com

JC Painting

1911 Treewood Ln.
San Jose, CA 95132

Years in business: 10

Service areas: 408

Services: painting

Contact: Chong B. Jwa, Owner

Phone: (408) 956-0340

Fax: (408) 956-8090

JRP Painting

1291 Parkway Dr.
Richmond, CA 94803

Years in business: 10

Service areas: 415, 510, 650, 925

Services: painting

Contact: Wanda Richardson,
Office Manager

Phone: (510) 223-6105

Fax: (510) 223-6105

E-mail: jrppainting@pacbell.net

Website: www.jrppainting.com

Kellco Services, Inc.



3137 Diablo Ave.
Hayward, CA 94545

Years in business: 15

Service areas: 408, 415, 510, 650, 925

Services: environmental (asbestos/lead),
risk assessment/paint inspection,
lab analysis, mold, indoor air quality

Contact: Tim Cannard, VP,
Senior Project Manager

Phone: (510) 786-9751

Fax: (510) 786-9625

E-mail: mailbox@kellco.com

Website: www.kellco.com

Kelley Painting & Waterproofing



190 Coleman Dr.
San Rafael, CA 94901

Years in business: 20
Service areas: 415, 650
Services: painting
Languages: Spanish

Contact: Mr. Kim Kelley, Owner
Phone: (415) 456-0951
Fax: (415) 456-5398
E-mail: kpandw@aol.com

LVI Environmental Services, Inc.



3004-I Alvarado St.
San Leandro, CA 94577

Years in business: 12
Service areas: 408, 415, 510, 650, 925
Services: environmental (asbestos/lead)
Performs lead clean-up work: interior dust,
exterior dust and paint chips
Languages: Spanish

Contact: Tami Casey,
Business Development Manager
Phone: (510) 357-5390
Fax: (510) 357-4506
E-mail: tcasey@lvisservices.com
Website: www.lvisservices.com

Manos Janitorial Cooperative



2869 38th Ave.
Oakland, CA 94619

Years in business: 14
Service areas: 510, 925
Services: lead cleaning
Performs lead clean-up work: interior dust
Languages: Spanish

Contact: Otto Rodriguez, Manager
Phone: (510) 534-8578
Fax: (510) 534-0446
E-mail: ottrdrgz@aol.com

Nova Abatement & Construction Services, Inc.



3051 Research Dr.
Richmond, CA 94806

Years in business: 2.5
Service areas: 408, 415, 510, 650, 925
Services: environmental (asbestos/lead),
home maintenance & repair,
soil removal, mold
Performs lead clean-up work: interior dust,
exterior dust and paint chips
Languages: Spanish

Contact: Stephen Schwartz, Vice President
Phone: (510) 669-0256
Fax: (510) 223-1750
E-mail: ssschwart@pacbell.net



Peanuts for Painting! A California Corporation

6144 Valley View Rd.
Oakland, CA 94611

Years in business: 21

Service areas: 408, 415, 510, 650, 925

Services: environmental (asbestos/lead), remodeling,
painting, home maintenance & repair,
waterproofing

Performs lead clean-up work: interior dust,
exterior dust and paint chips

Languages: Spanish, Arabic



Contact: Fred J. Schmidt, President

Phone: (415) 346-7107

Fax: (510) 338-0092

E-mail: fstpnut@aol.com

Professional Services Company

3145 Gears Blvd., #36
San Francisco, CA 94118

Years in business: 10

Service areas: 415, 650, 510, 925

Services: remodeling, painting

Contact: George Lee, Director

Phone: (415) 788-2280

Fax: (415) 399-0338

E-mail: gleepsail@usa.net

Quality Asbestos Control, Inc.



33364 Dowe Ave.
Union City, CA 94587

Years in business: 15

Service areas: 408, 415, 510, 650, 925

Services: environmental (asbestos/lead),
mold remediation

Performs lead clean-up work: interior dust,
exterior dust and paint chips

Contact: Joseph McCurdy, Vice Pres.

Phone: (510) 475-7080

Fax: (510) 475-7445

E-mail: qacinc@netgate.net

R. B. Construction, Inc.



893 Boggs Terrace
Fremont, CA 94539

Years in business: 11

Service areas: 408, 415, 510, 650, 925

Services: environmental (asbestos/lead), soil removal

Performs lead clean-up work: interior dust,
exterior dust and paint chips

Languages: Spanish

Contact: Christopher L. Luengo,
Project Manager/Corp. Sec.

Phone: (510) 683-8780

Fax: (510) 683-8782

E-mail: rbconst@pacbell.net

Rhapsody Painting & Environmental Services, Inc.



850 South Van Ness Ave. #25
San Francisco, CA 94110

Years in business: 8
Service areas: 408, 415, 510, 650, 925
Services: environmental (lead), painting,
window replacement, soil removal
Performs lead clean-up work: interior dust,
exterior dust and paint chips
Languages: Spanish

Contact: Joseph Ruiz,
Field Superintendent
Phone: (415) 824-5010
Fax: (415) 824-5040
Cell: (415) 720-4474
E-mail: rhapsody77@sbcglobal.net

Schinman Painting



124 27th St.
San Francisco, CA 94110

Years in business: 12
Service areas: 415, 650
Services: painting
Performs lead clean-up work: interior dust,
exterior dust and paint chips

Contact: Phil Schinman, Owner
Phone: (415) 282-8946
Fax: (415) 282-8946
E-mail: phil@schinmanpainting.com
Website: www.schinmanpainting.com

S.R.H. Construction



15213 Edgemoor St.
San Leandro, CA 94579

Service areas: 408, 415, 510, 650, 925
Services: environmental (asbestos/lead),
remodeling, painting, window replacement
Performs lead clean-up work: interior dust,
exterior dust and paint chips
Languages: Spanish

Contact: Sergio R. Hernandez,
President
Phone: (510) 459-8057
E-mail: hernand409@aol.com

Southwest Hazard Control, Inc.



712 Whitney St.
San Leandro, CA 94577

Service areas: 408, 415, 510, 650, 925
Services: environmental (asbestos/lead)
Performs lead clean-up work: interior dust,
exterior dust and paint chips
Languages: Spanish

Contact: Mike Hegarty, Division Mngr.
Phone: (510) 352-5152
Fax: (510) 352-5155
E-mail: mixalis@msn.com
Website: www.swhaz.com



Spring Friedlander Remodeling

434 – 66th St.
Oakland, CA 94609

Service areas: 510, 925

Services: remodeling, painting,
home maintenance & repair,
window replacement, plastering,
termite repair

Contact: Spring Friedlander, Owner

Phone: (510) 652-7600

Fax: (510) 652-9817

E-mail:

SpringFriedlander@worldnet.att.net

Stahlschmidt Painting & Restoration



1446 Scenic Ave.
Berkeley, CA 94708

Years in business: 15

Service areas: 510

Services: painting

Languages: Spanish, German

Contact: Hans Stahlschmidt, Owner

Phone: (510) 848-4040

Fax: (510) 848-4040

E-mail: stahlschmidt@attbi.com

Synergy Environmental Inc.



28436 Satellite St.
Hayward, CA 94545

Years in business: 17

Service areas: 408, 415, 510, 650, 925

Services: environmental (asbestos/lead)

Performs lead clean-up work: interior dust,
exterior dust and paint chips

Languages: Spanish

Contacts: Sal Vaccard, President

Peter Landre, Estimator

Phone: (510) 259-1700

Fax: (510) 259-1715

E-mail: plandre@synergycompanies.org

Waters Caldwell & Associates, Inc.



PMB #682
909 Marina Village Parkway
Alameda, CA 94501

Years in business: 6

Service areas: 415, 650, 510, 925

Services: environmental (asbestos/lead)

Performs lead clean-up work: interior dust,
exterior dust and paint chips

Languages: Spanish

Contacts: Gloria Waters, President

Jacqueline Caldwell, VP

Phone: (510) 865-5089

Fax: (510) 865-5091

Z-CON Speciality Services, Inc.



1780-K Old Bayshore Rd.
San Jose, CA 95112

Years in business: 10

Service areas: 408, 415, 510, 650, 925

Services: environmental (asbestos/lead)

Performs lead clean-up work: interior dust,
exterior dust and paint chips

Languages: Spanish

Contact: David Zanotti, President

Phone: (408) 451-9512

Fax: (408) 451-9514

E-mail: zconssi@aol.com



Resources

The Alameda County Lead Poisoning Prevention Program has information about lead poisoning prevention and safe lead hazard reduction as well as services for families and property owners. Call our public information line at 510-567-8280 or visit our website at www.aclppp.org.

If you do not live in Alameda County, the following is a list of other county lead programs in the Bay Area:

- ◆ Contra Costa County
Lead Poisoning Prevention Project
(510) 231-8500
- ◆ San Francisco County
Childhood Lead Prevention Program/Children's Environmental Health
(415) 554-8930
- ◆ Santa Clara County
Public Health Department, Childhood Lead Poisoning Prevention Program
(408) 793-6440

The following websites may also be helpful:

Alliance to End Childhood Lead Poisoning	www.aeclp.org
CDC Childhood Lead Poisoning Program	www.cdc.gov/nceh/lead
Contractors State License Board	www.cslb.ca.gov
Environmental Protection Agency Lead Page	www.epa.gov/lead
HUD Office of Lead Hazard Control	www.hud.gov/offices/lead
National Lead Information Center	www.nsc.org/ehc/lead.htm
State of California Department of Health Services Childhood Lead Poisoning Prevention Branch	www.dhs.ca.gov/childlead
Occupational Lead Poisoning Prevention Branch	www.dhs.cahwnet.gov/ohb/olppp
University of Minnesota Extension (Lead in Soil)	www.extension.umn.edu/distribution/horticulture/DG2543.html

This project was funded by the Alameda County Lead Poisoning Prevention Program and the Joint Powers Authority, representing the cities of Oakland, Berkeley, Alameda, and Emeryville.

Special thanks to:

Denise Nguyen, Julie Twichell, Doug Henderson, Dale Hagen, and Peter Belanger at the ACLPPP, and Russell Stowe at California Department of Health Services for their insights and contributions to this project.

Booklet design by WinterGraphics

*If your company would like to be included in the fourth edition,
please call (510) 567-8280*

The Alameda County Lead Poisoning Prevention Program
2000 Embarcadero, Suite 300
Oakland, CA 94606
(510) 567-8280
www.aclppp.org